

# MultiVOIP® AV

## Survivable H.323 Gateway for Avaya Systems



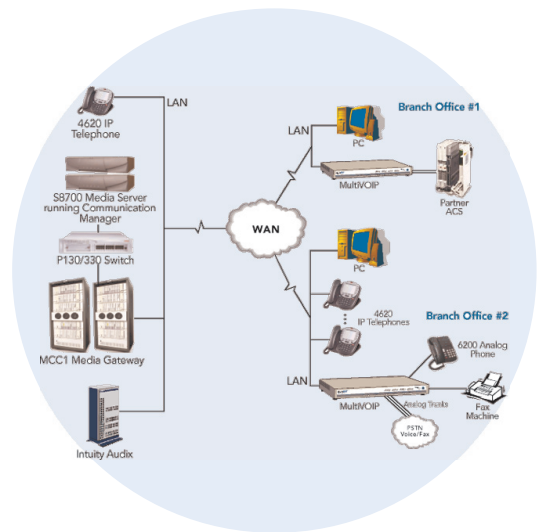
### Benefits

- Local office survivability
- Analog PSTN trunking
- Multi-port ATA functionality

The MultiVOIP® AV survivable H.323 gateway for Avaya Communication Manager environments is ideal for small branch offices (1-15 phones/employees) of large corporations. It functions as the alternate gatekeeper for IP phones used at the remote offices and renders local office survivability, in the case of a LAN or WAN failure, by providing local, reliable PSTN trunking. The MultiVOIP AV gateway also provides local PSTN access for emergency calls, such as 911, as well as normal inbound/outbound local calling. In addition, the gateway functions as an ATA adapter, adapting analog phones and fax machines to IP environments.

### Features

- 1, 2, 4 or 8 analog ports for communication over an existing IP network or the Internet
- Supports H.323 for sending voice over the Internet
- Programmable FXS/FXO/DID connectors on each channel for direct analog connection to phones, key telephones, PBX extensions, PSTN lines or PBX trunks
- Provides local office survivability in the event of a LAN/WAN failure
- Distinctive survivable dial-tone
- Emergency transfer (power-out fail-over)
- PSTN trunking bridges the PSTN to the IP network for emergency calls as well as normal inbound/outbound calling
- Multi-port ATA functionality for analog phones and fax machines
- Ethernet connectivity and full IP compatibility with existing routers and WAN infrastructure
- Voice compression to 5.3K bps per call with support for multiple algorithms, including ITU G.723 and G.729
- QoS via DiffServ
- T.38 real-time fax relay for interoperability with Avaya Communications Manager 2.1.1
- Supports message waiting light, stutter dial tone, Caller ID
- Includes modem for Avaya installation and maintenance (MVP210-AV, MVP410-AV and MVP810-AV models)
- Supports Avaya 4610SW, 4620SW, 4602, 4606, 4612, 4620, 4624, 9620 and 9630 model IP phones
- Adaptive echo cancellation, forward error correction and dynamic jitter buffers
- Configuration and management using a Web browser or Windows
- One-year warranty



## Highlights

**Local Office Survivability.** The MultiVOIP AV gateway functions as an alternate gatekeeper in an environment using IP phones. In the event of a WAN failure, IP phones register with the MultiVOIP gateway's integrated gatekeeper allowing calls to be redirected through local PSTN trunks. This allows the office to maintain critical inbound/outbound communications until full functionality is restored. A distinct dial tone alerts the user that the system is in survivable mode.

In the event of a LAN failure, the MultiVOIP AV gateway goes into LAN fail-over survivability mode. Inbound/outbound calls can be made via analog phones or PSTN lines directly connected to the MultiVOIP AV gateway. The user would simply need to dial an extension to reach the PSTN trunk before making an outbound call.

In the event of a power failure, the MultiVOIP AV gateway provides emergency transfer fail-over survivability. This is achieved by connecting an analog telephone or fax machine to the first port on the gateway, and a PSTN line to the second port. When in this mode, the gateway automatically draws power from the PSTN line and supplies it to the analog phone/fax handset to provide inbound/outbound calling.

**PSTN Trunking.** The MultiVOIP AV gateway provides local PSTN access for emergency calls such as 911, as well as normal inbound/outbound calling. A PSTN line, connected directly to one of the ports on the gateway, provides a branch office with a local phone number for inbound/outbound calling.

**Multi-port ATA Functionality.** The MultiVOIP AV gateway adapts analog phones and fax machines to IP environments. The analog equipment is connected directly to a port on the gateway. The gateway registers the equipment with the central Avaya server as an IP endpoint. Now the analog equipment can call or fax to anyone over the IP network.



## Ordering Information

Product	Description	Region
MVP130-AV-FXS*	1-Port FXS Analog Adapter	Global
MVP130-AV*	1-Port FXS/FXO Analog Adapter	Global
MVP210-AV*	2-Port VOIP Gateway/Gatekeeper	Global
MVP410-AV*	4-Port VOIP Gateway/Gatekeeper	Global
MVP810-AV*	8-Port VOIP Gateway/Gatekeeper	Global

\* Specify country when ordering.

Made in Mounds View, MN, U.S.A.

Features and specifications are subject to change without notice.

**Trademarks / Registered Trademarks:** MultiVOIP, Multi-Tech, and the Multi-Tech logo: Multi-Tech Systems, Inc. / All other products and technologies are the trademarks or registered trademarks of their respective holders.

## Specifications

### Analog Ports

Number of ports: 1, 2, 4 or 8

Port Interface: FXS, FXO, DID support on each port

FXS Interface: KTS, telephone set, or fax; ground & loop start

FXO Interface: PBX station; CO line, loop start, 2-wire

DID Service Types: Wink-start; immediate-start; delay dial

DID Signaling Type: DTMF

DID Operational Mode: Dial Pulse Originating (DPO)

Dialing: DTMF or pulse

Connectors: 1 RJ-11 (programmable FXS, FXO or DID) per port

### LAN Port

Format: Ethernet/Ethernet II or SNAP

Interface: 10/100BaseT

### Command Port

1- and 2-Port Interface: RS-232C/D; RJ-45 (RJ-45 to DB9 cable included)

4- and 8-Port Interface: RS-232C/D; DB25

Speed & Format: 115.2K bps asynchronous

### Protocols

SIP, RTP, RTCP, SMTP, Q.931, T.38 & Group 3 Fax relay, DTMF out-of-band (RFC 2833)

### Bandwidth Management

G.711, G.723, G.726, G.727, G.729 & proprietary voice compression, silence suppression, VAD, CNG

### Voice Quality

DiffServ, G.165, G.168, adaptive echo cancellation, forward error correction, bad frame interpolation, tunable latency, dynamic jitter buffers

### Management

Web browser, Windows, flash upgradeable

### Power

Voltage & Frequency: 115V/240VAC, 47/60 Hz

Power Consumption:

1-Port Model: 9.7W; 2-Port Model: 19W;

4- & 8-Port Models: 46W

### Dimensions

1-Port Model: 4.3" w x 1.0" h x 5.6" d; 8 oz.; (10.9 cm x 2.5 cm x 14.2 cm; 0.23 kg)

2-Port Model: 6.2" w x 1.4" h x 9.0" d; 2 lbs.; (15.7 cm x 3.6 cm x 22.9 cm; 0.91 kg)

4-Port & 8-Port Models: 17.3" w x 1.7" h x 8.4" d; 7.4 lbs.; (43.9 cm x 4.3 cm x 21.3 cm; 3.4 kg)

### Certification

EMC: FCC Part 15 Class A, EN 55022, EN 55024, EN 61000-3-2, EN 61000-3-3

Safety: CE, UL 60950, EN 60950, cUL, ACA TS-001

Telecom: FCC Part 68, CS-03, TBR21, ACA TS-031, TBR3

#### World Headquarters

Tel: (763) 785-3500  
(800) 328-9717

[www.multitech.com](http://www.multitech.com)

#### EMEA Headquarters

Multi-Tech Systems (EMEA)  
United Kingdom

Tel: +(44) 118-959 7774

Multi-Tech Systems (EMEA)  
France

Tel: +(33) 1 49 19 22 06